

# ProjectFlow Jumping 101 Guide

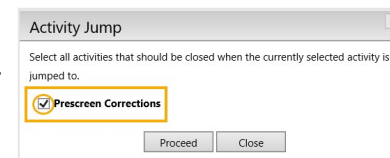
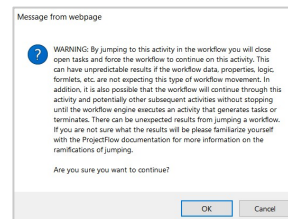
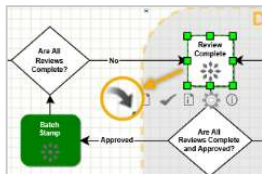
From	To	Yes/NO	Comments	
Any Applicant Step	Anywhere	NO	See “ProjectFlow document” for ways to accomplish naturally	
Any Step	Any Applicant Step	NO	*See exception below	
*Assign Reviewers	Prescreen Corrections	Yes	Jump to Permissions Step – See “ProjectFlow document” for more information	
Batch Stamp	Review Complete	Yes	No Considerations Needed	
Department Review	Any Step	NO	See “ProjectFlow document”	
Any Step	To or over Department Review	NO	See “ProjectFlow document”	
Any Step with a Gear	To or over Any Step with a Gear	NO	Jumps on an integrated system can affect both systems. Do not proceed without understanding potential impacts.	

## Tips:

Always select the jump icon under the desired step.

The warning dialog box is there for a reason. Read it before you accept and proceed.

Ensure that the step(s) that you intend to close are selected in the dialog box. They may be checked by default.



**WARNING:** If an error occurs contact Avolve Support for assistance.